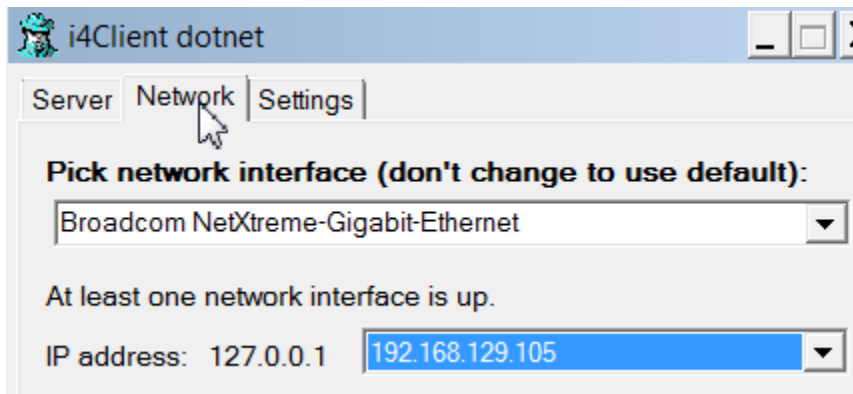


# i4Client.NET Setup

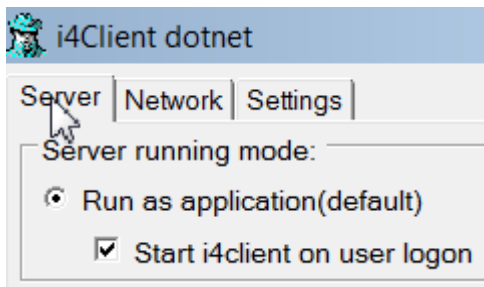
⇒ Run „Setup i4ClientDotNet.exe“

## Configuration

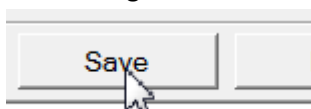
1. At Network-Tab select the Network Interface you are going to use and make sure to select a IP-Adress in a non-IPv6 way! Sample:



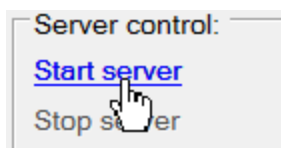
2. At the Server Tab you may choose to start automatically with the checkbox “Start i4client on user logon”



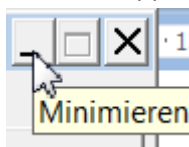
3. Save Configuration



4. Start i4Client Server



5. In case of errors on start of server, please start the application as Administrator.
6. Minimize Application (do not close with X!)



7. i4Client is waiting on calls from i4Win, iExcelGen, i4Spool and other GOERING Tools...